

# U.S. National Ice Center

## PRESS RELEASE



### **Iceberg D-26 Calves off an ice shelf along the Princess Astrid Coast**

April 8, 2016, Suitland, MD — The U.S. National Ice Center (USNIC) named a new iceberg that calved from the Princess Astrid Coast in Antarctica. The iceberg broke off the ice shelf earlier this week and has drifted less than a mile from where it calved.

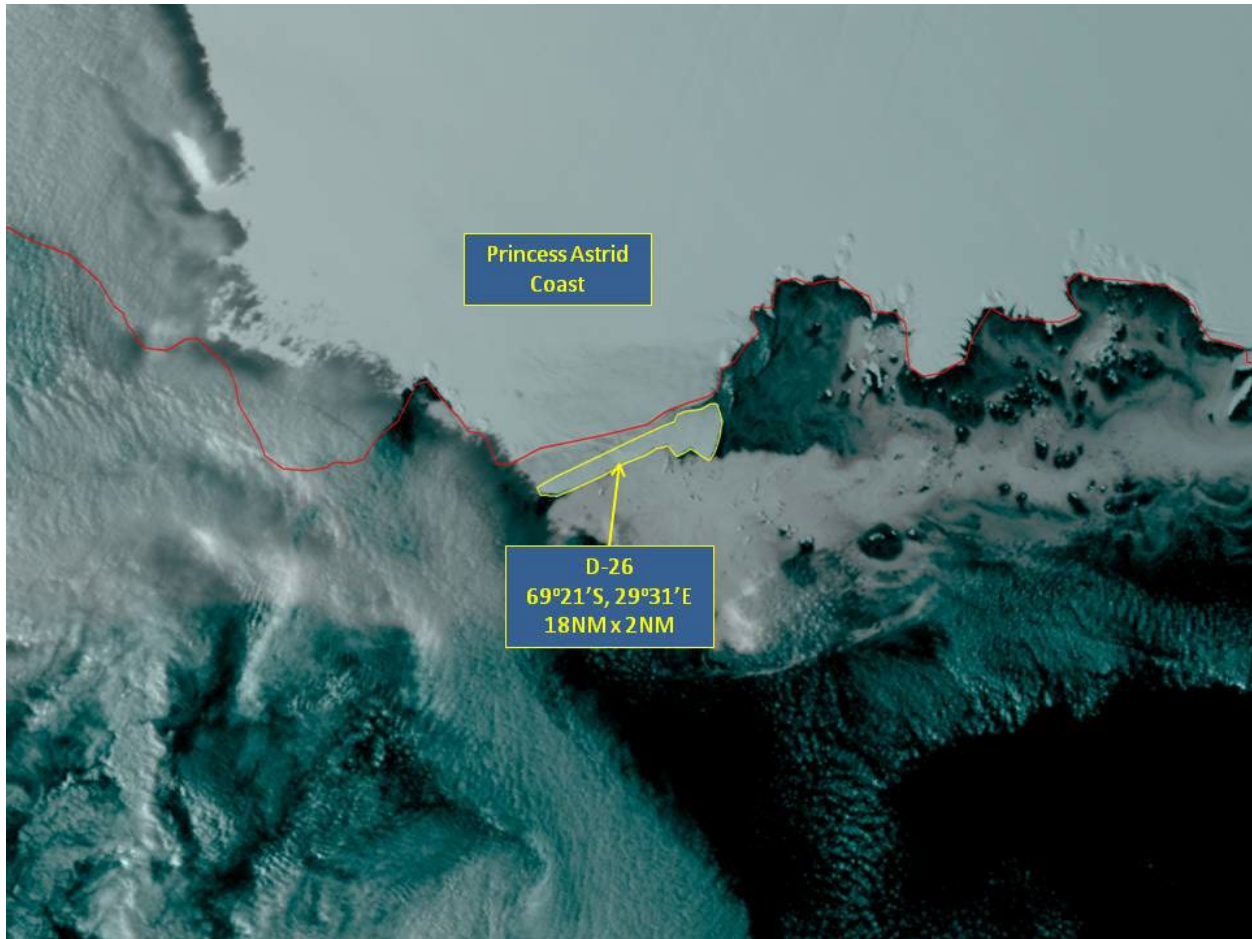
D-26 is located at 69°21' South, 29°31' East, in the Amery Sea. The iceberg measures 18 nautical miles on its longest axis and 2 nautical miles on its widest axis. Analyst Chris Readinger confirmed iceberg D-26 using the MODIS image shown below.

Iceberg names are derived from the Antarctic quadrant in which they were originally calved. The quadrants are divided counter-clockwise in the following manner:

- A = 0-90W (Bellingshausen/Weddell Sea)
- B = 90W-180 (Amundsen/Eastern Ross Sea)
- C = 180-90E (Western Ross Sea/Wilkesland)
- D = 90E-0 (Amery/Eastern Weddell Sea)

When first sighted, an iceberg's point of origin is documented by USNIC. The letter of the quadrant, along with a sequential number, is assigned to the iceberg. For example, C-19 is sequentially the 19th iceberg tracked by USNIC in Antarctica between 180-90E (Quadrant C). Icebergs with letter suffixes have calved from already named icebergs, where the letters are added in sequential order. For example, C-19D is the 4th iceberg to calve off the original C-19 iceberg.

Iceberg positions are analyzed weekly and are available on the USNIC webpage at:  
<https://usicecenter.gov/Products/AntarcIcebergs>



MODIS image of D-26 dated April 8, 2016

USNIC is a multi-agency center—subordinate to Naval Meteorology and Oceanography Command—operated by the Navy, NOAA, and Coast Guard which provides global to tactical scale ice and snow products, ice forecasting, and related environmental intelligence services for the United States government.

Naval Meteorology and Oceanography Command directs and oversees more than 2,500 globally-distributed military and civilian personnel who collect, process and exploit environmental information to assist Fleet and Joint Commanders in all warfare areas to make better decisions faster than the adversary.

For more information, please contact:  
U.S. National Ice Center  
Command Duty Officer  
E-mail: [nic.cdo@noaa.gov](mailto:nic.cdo@noaa.gov)  
Voice: (301) 943-6977  
Visit us on Facebook at: <https://www.facebook.com/usnatice/>

